

Do you do any ELECTRICAL MAINTENANCE?

Do you understand the importance of electrical maintenance and what can happen if you neglect this important task?

Possible problems caused by loose terminations/connections, dirt and dust in panels and also blocked control panel filters.

- Overheating of cables.
 - Nuisance, overload tripping.
 - Unbalanced loads.
 - Interference on control gear.
- ☒ Contactor failure.
 - ☒ Fire.
 - ☒ Intermittent faults
 - ☒ Control equipment failure.



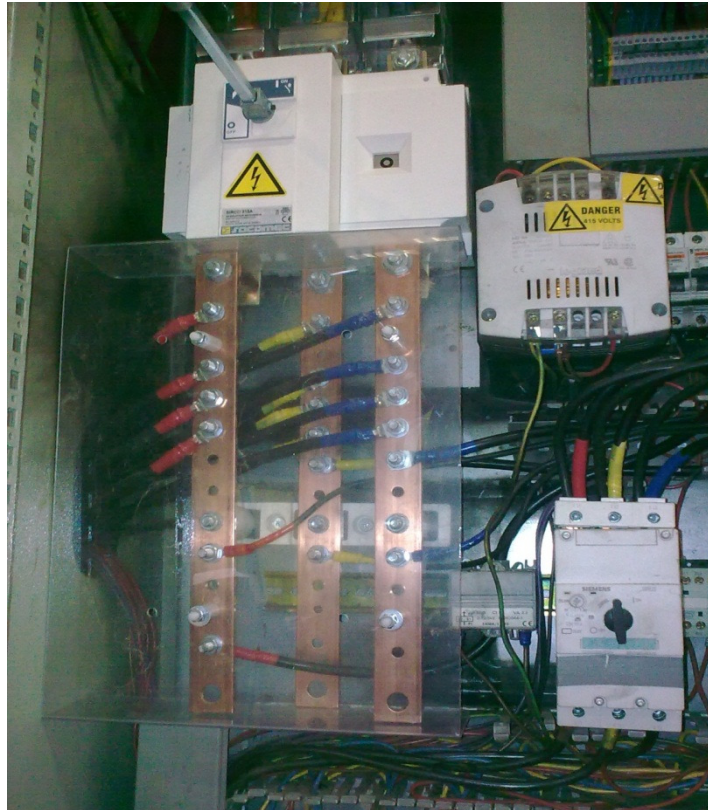
This picture was taken by us after one of our customers called us in to look at electrical faults they were experiencing.

As you can see from the picture, they were lucky to avoid a fire.

On investigation, we determined that this situation was caused by loose terminations and crimps. Also, each of the terminal lugs was overloaded.



The following pictures were taken after we replaced the isolator, and damaged cables. We also fitted a bus bar arrangement so that the isolator lugs were no longer overloaded.



As you can see, there is a big difference from the previous pictures. By using the bus bar system any future panel modifications can be easily made.

This expense could have been avoided by completing regular electrical inspections and maintenance. An annual inspection of your control panels and isolators checking all the terminations for tightness, looking for signs of heat and cleaning dust from the panels and filters.

DSL can provide a full service including electrical maintenance, testing and inspection. We also offer thermal imaging to identify any electrical and mechanical hotspots.